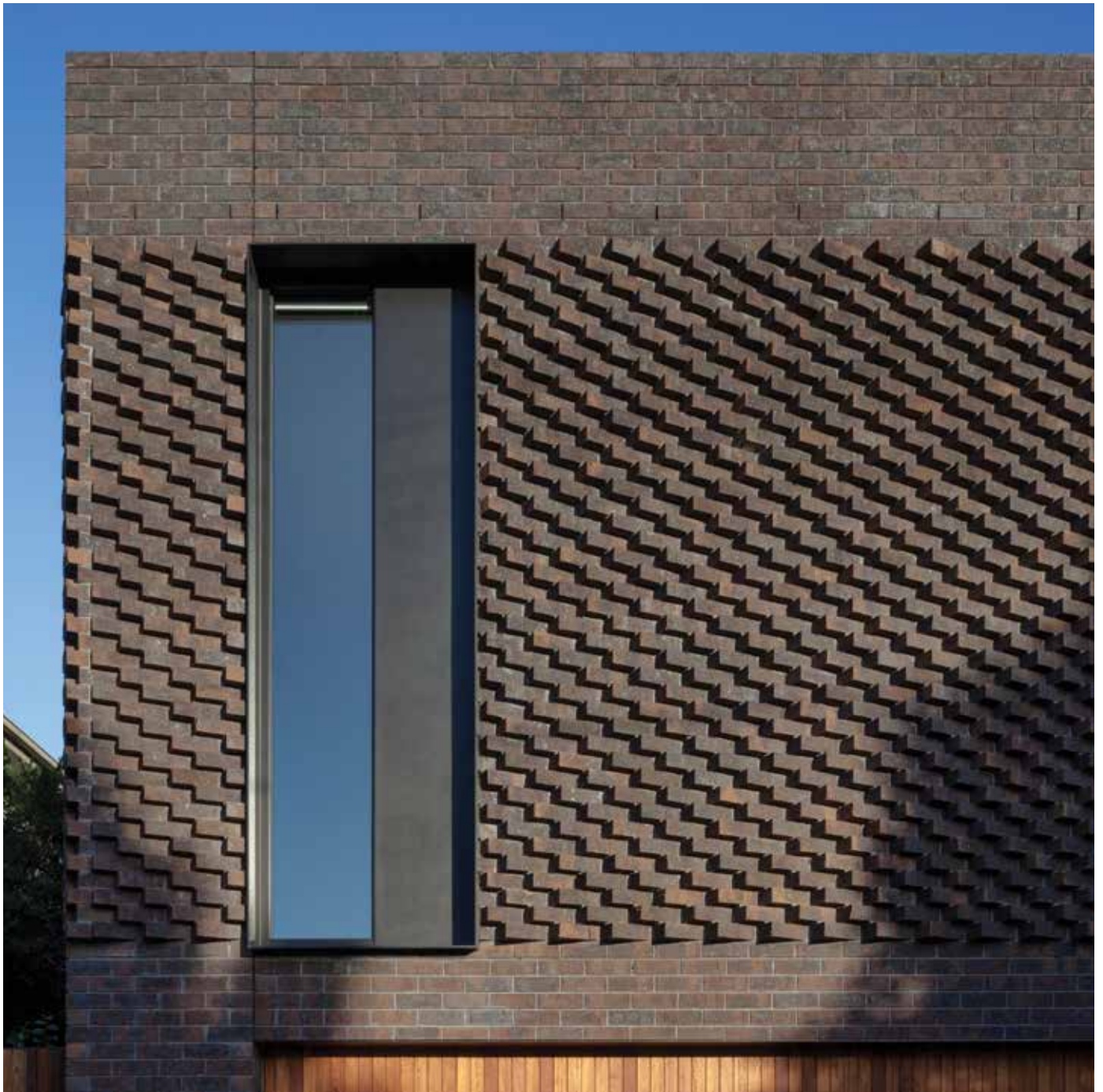


Daniel Robertson

Crafted Clay Bricks



“ARCHITECTURE STARTS WHEN YOU CAREFULLY
PUT TWO BRICKS TOGETHER” *Ludwig Mies van der Rohe, Architect*

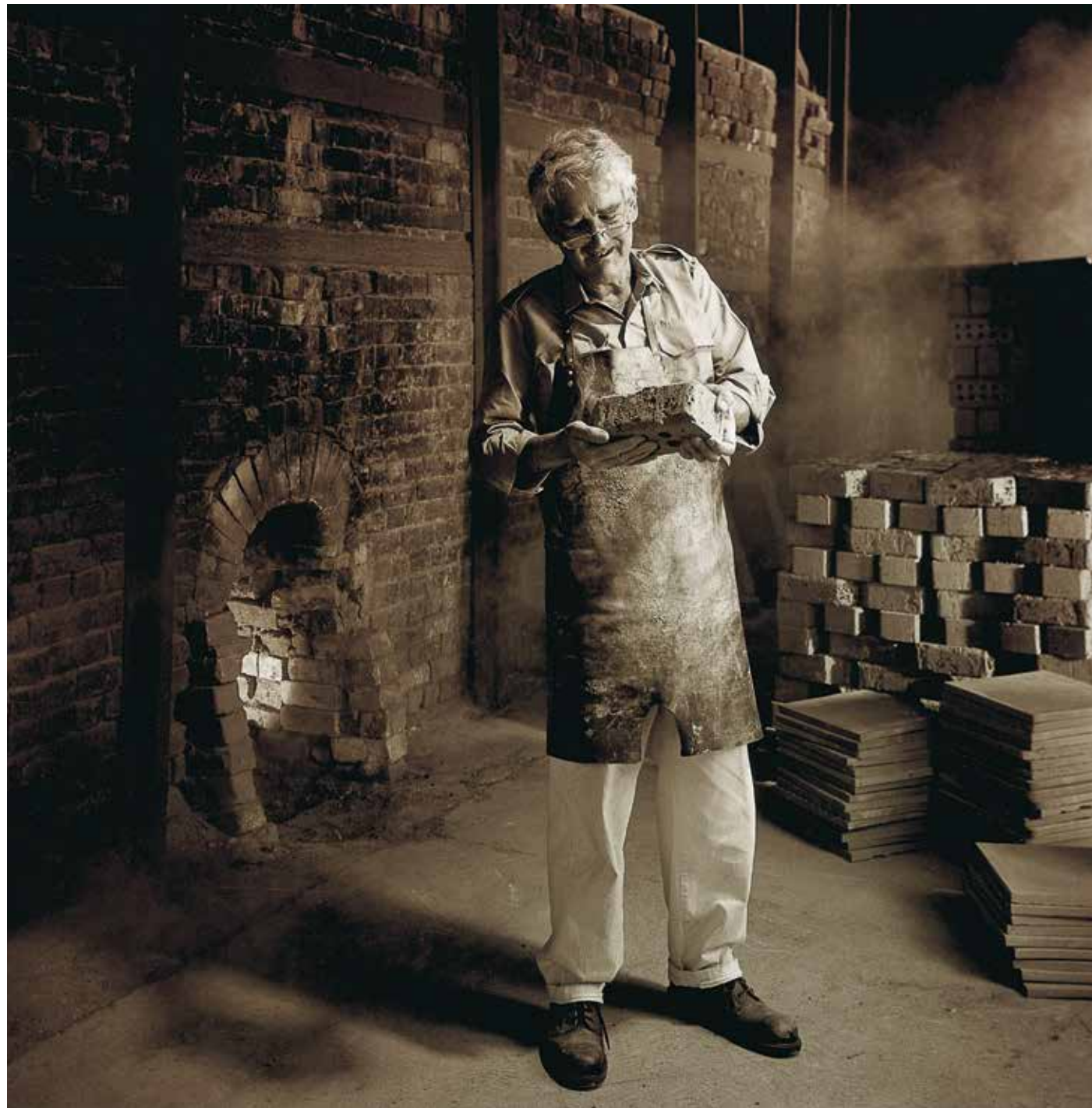


Hawthorn London – Architect: Matyas Architects / Photographer: Tatjana Plitt
Front Cover: Hawthorn London – Architect: Matyas Architects / Photographer: Tatjana Plitt

CONTENTS

<i>A Legacy in Brick</i>	4
<i>Hawthorn</i>	6
<i>Hawthorn50</i>	8
<i>Hawthorn470</i>	10
<i>Traditional</i>	12
<i>Traditional50</i>	14
<i>The Avenue</i>	16
<i>Carbon Neutral Products</i>	18
<i>Technical Details</i>	20
<i>We are Brickworks</i>	22

A LEGACY IN BRICK



The story of Daniel Robertson begins in 1853 when John Robertson imported Welsh roofing slates as ballast in sailing ships into Melbourne.

He was soon providing all forms of roofing, including terracotta tiles, across his newly adopted hometown and in 1910 the company commenced its first manufacturing venture producing concrete roof tiles in Whiteman Street, South Melbourne.

To this day, many of Melbourne's most notable buildings still feature those original Daniel Robertson roofs. But it wasn't until 1928 that the company sealed its reputation for quality craftsmanship after acquiring Tunstall Brickworks in Nunawading and converting it for the production of terracotta tiles.

The transition to red clay products proved extremely successful and business grew rapidly.

By 1967 the company was a leader in the field, researching and developing new colours, shapes and textures. In that same year, it launched a unique range of rustic bricks as an alternative to the smooth-faced options only available at the time.

They were an instant hit.

Demand for this new product soon became so great that roof tile production was phased out within two years to focus on manufacturing bricks.

In 2012 Australia's largest building products manufacturer Brickworks Building Products group acquired the company. Under this well respected banner, Daniel Robertson continues to deliver excellence and innovation in architectural brickwork.

There are simply no better premium quality bricks available today.

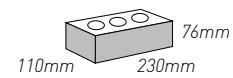
HAWTHORN

This range pays tribute to the iconic Hawthorn brick that gives so many historic homes in Melbourne's inner-city suburbs their distinct character.

The product's face is heavily textured and no two clay bricks are exactly the same, lending it a truly unique, handmade aesthetic. For this reason, it has become a firm favourite in heritage renovations and extensions, as well as new modern residential and commercial developments.

With a traditional colour palette consisting of warm earthy reds, greys, blacks, browns and tans, this range evokes an old world charm. All colours except Oxford and Surrey are carbon neutral.

DIMENSIONS



*Hawthorn Red**



*Hawthorn Tan**



*Hawthorn Black**



*Cambridge**



Oxford



Surrey



*London**

**Classified carbon neutral*



Hawthorn Black – Architect: Kann Finch / Photographer: Roger du Buisson

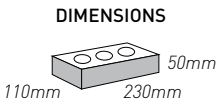


Hawthorn London – Architect: Matyas Architects / Photographer: Tatjana Plitt

HAWTHORN 50

This clay brick features the heavily textured face of the Hawthorn yet in a slim, elegant profile. Its compact, thoroughly modern appearance, make it ideal for feature wall applications or for projects that call for a distinct contemporary look.

Like its standard counterpart, this brick is also available in earthy reds, greys, blacks, browns and tans. All colours are carbon neutral.



Hawthorn50 London – Architect: K2LD Architecture / Photographer: Aaron Pocock Architectural Photography



Hawthorn Red*



Hawthorn Tan*



Hawthorn Black*



Cambridge*



London*

*Classified carbon neutral



Hawthorn50 London – Architect: K2LD Architecture / Photographer: Aaron Pocock Architectural Photography



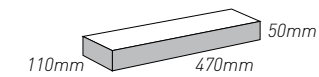
HAWTHORN470

Introducing the newest addition to the Hawthorn collection – Hawthorn470.

When architects, builders and homeowners are looking for a large architecturally robust brick, this is the one they choose. The product is twice the length of the Hawthorn50 and works especially well as a feature wall or panel in combination with any of the other ranges.

As with all Daniel Robertson bricks, it's suitable for both interior and exterior applications across all project types.

DIMENSIONS



Oxford



Surrey



Traditional Red



Traditional Apricot

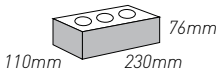
TRADITIONAL

Daniel Robertson's very first range of clay bricks is still as popular today as when the company first began making their non-glazed products in the 1960s.

Its highly textured face, not dissimilar to the Hawthorn, is a favourite amongst architects, builders and homeowners who appreciate an earthy, rustic appearance.

Available in the original colour palette of reds and buffs, this hard wearing brick exemplifies the heritage and craftsmanship of the Daniel Robertson brand. As a carbon neutral product, it is manufactured using sustainable and environmentally friendly processes.

DIMENSIONS



Buff*



Dulwich Grey*



Apricot*



Red*

*Classified carbon neutral



Traditional50 Red – Designer: Peter Jackson Design / Photographer: Michael Laurie

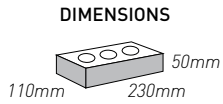


Traditional50 Red– Architect: Matt Gibson Architecture + Design / Photographer: Shannon McGrath

TRADITIONAL50

This clay brick has every bit the rustic charm of the standard Traditional but in a modern sleek format. Its slimline profile makes it ideal for feature wall applications or projects that call for a contemporary aesthetic and feel.

Generations of brickmaking have refined its crafting and like the standard Traditional format, all colours are classified carbon neutral.



Buff*



Dulwich Grey*



Apricot*



Red*

*Classified carbon neutral

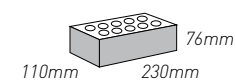
THE AVENUE

A recent addition to the Daniel Robertson portfolio, this range is much smoother in appearance than the Traditional or Hawthorn.

While not perfectly flush, it has a slightly textured face ideal for achieving a uniform finish. It visually references yesteryear, despite its thoroughly modern design.

The rich reds and blue-blacks of this clay brick ensure a stunning result in all projects, from residential to commercial.

DIMENSIONS



Jackson



Charlton



Stratton



Maddox



The Avenue Charlton - Hudson Homes

AUSTRALIA'S FIRST CERTIFIED CARBON NEUTRAL BRICKS

Using sustainable practices and protecting our environment are major concerns for Daniel Robertson so we became the first brick manufacturer in Australia to produce certified carbon neutral bricks. That means we have significantly reduced our carbon footprint and offset the remaining emissions.

Zero Net Emissions

All Daniel Robertson bricks which are manufactured in Tasmania are carbon neutral, which means zero net emissions.

Reducing Daniel Robertson's carbon footprint

Daniel Robertson achieved carbon neutral bricks by reducing emissions through efficiency improvements and by offsetting the remaining emissions. This breakthrough has been assessed and certified against the Australian Government's National Carbon Offset Standard.



SAWDUST IS THE SECRET TO OUR SUCCESS



Sawdust, a biomass, fuels our kilns

Sawdust is a local Tasmanian waste product and is the secret ingredient to our carbon neutral success. We use waste sawdust from the local Tasmanian timber industry as a fuel to fire our kilns. Sawdust is known as a biomass – a biological material derived from living, or recently-living organisms. The sawdust produces a more sustainable manufacturing process than any traditionally used fossil fuel.

Sawdust firing versus natural gas

The graphic below shows the annual CO2 reduction at the Tasmanian Longford plant, from the use of sawdust as fuel versus natural gas. Using sawdust in comparison to natural gas to fire the kilns reduces the emissions by 8,392 tonnes of CO2 annually.



TECHNICAL

details

Mortar colour | Mortar finishes

Mortar Colour

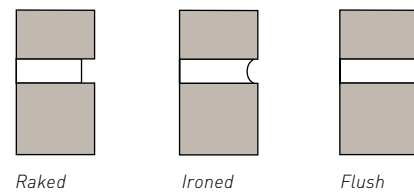
Off-white mortar is currently the most popular colour. This is made by mixing light coloured cement and white sand and results in a traditional bricks and mortar look. Mortar can be coloured by adding powdered or liquid pigments to the mortar as it is being mixed by the bricklayer. It can also be tinted to match the brick colour, giving a very even wall colour. Please confirm with your bricklayer what their mortar colouring offering is before making your final decision.



Mortar finishes

There are three common mortar finishes and these various finishes result in different shadow lines on the wall.

- A raked finish will create a deep shadow in the mortar joint. This brings out the horizontal lines of the brickwork (and the vertical lines to a lesser extent).
- Ironed or rolled joints also create shadow lines, but these are much finer and more subtle.
- A flush joint doesn't allow shadow lines to form at all, giving the wall a flatter, more unified look. This is recommended for Hawthorn and Traditional ranges so as to best showcase the texture and shape variation. Using a mortar colour to match the brick will take this a step further.



TECHNICAL

details

Durability | Carbon Neutral | Solar Rating

Hawthorn	Hawthorn50	Hawthorn470	Traditional	Traditional50	The Avenue
Hawthorn Red GP / D / CN	Hawthorn Red GP / D / CN	Oxford GP / D	Buff GP / D / CN	Buff GP / D / CN	Jackson EXP / D
Hawthorn Tan GP / D / CN	Hawthorn Tan GP / D / CN	Surrey GP / D	Apricot GP / M / CN	Apricot GP / M / CN	Charlton EXP / D
Hawthorn Black GP / D / CN	Hawthorn Black GP / D / CN		Red GP / D / CN	Red GP / D / CN	Stratton EXP / D
Cambridge GP / D / CN	Cambridge GP / D / CN		Dulwich Grey GP / D / CN	Dulwich Grey GP / D / CN	Maddox EXP / D
Oxford GP / D	London GP / D / CN				
Surrey GP / D					
London GP / D / CN					

EXP = Exposure grade

Suitable for use in external walls exposed to aggressive environments, such as; areas subjected to salts in the soil, adjacent material or ground water, in coastal areas exposed to attack from windborne salt spray, or retaining walls subjected to fertilisers and ground salts.

GP = General purpose

Suitable for internal and external walls only when above a sheet or membrane damp-proof course and protected by an adequate coping, eaves, roof or similar top covering. These units should not be directly exposed to saline environments.

CN = Carbon Neutral

Bricks manufactured in our Longford, Tasmania plant are classified as Carbon Neutral due to having zero net emissions.

Solar absorbance rating

In the design of energy efficient buildings, the architects and consulting engineers need to be able to calculate the heat loss or gain of materials used to construct these buildings.

For this reason, our product range has been categorised into three colour groups –

Light (L) ← 0.475 Light

Medium (M) 0.475 - 0.70 Medium

Dark (D) → 0.70 Dark

to assist architects and consulting engineers with their calculations.



style with substance

WE ARE

Brickworks

Brickworks Building Products is one of Australia's largest and most diverse building material manufacturers. Under the Brickworks Building Products umbrella are some of Australia's best known building materials brands. Our products include bricks, pavers, masonry blocks, retaining wall systems, precast concrete panels, concrete and terracotta roof tiles, timber products, terracotta façades and specialised building systems.

With a broad product portfolio and manufacturing and sales facilities across Australia, Brickworks Building Products is uniquely placed to service the demands of the building industry.

With over 1200 staff across Australia and New Zealand, we pride ourselves on our commitment to product, service excellence and our leadership position.

BRICKWORKS
BUILDING PRODUCTS

australbricks
SINCE 1908

australmasonry

australprecast

auswesttimbers

bristiler roofing

BOWRAL BRICKS

nubrik
AUTHENTIC ENICKWORK

DANIEL ROBERTSON
EST. 1853

terraçade
TERRACOTTA FAÇADE SYSTEMS

INEX > BOARDS

Pronto Panel

Proud Supporters



Traditional50 Red
Architect: Matt Gibson Architecture + Design
Photographer: Shannon McGrath



www.danielrobertson.com.au

follow brickworks building products on



DESIGN STUDIOS

Sydney CBD

Ground Floor
50 Carrington
Street, Sydney
NSW 2000

Melbourne

490 Swan Street
Richmond
VIC 3121

Adelaide

Ground Floor
70 Hindmarsh
Square, Adelaide
SA 5000

Brisbane

27 James Street
Fortitude Valley
QLD 4006

Perth

67 King Street
Perth
WA 6000

Hobart

9 Franklin Wharf
Hobart
TAS 7000

The product images in our brochures give a general indication of colour for your preliminary selection.
We also recommend you view current product samples before making your final decision.